



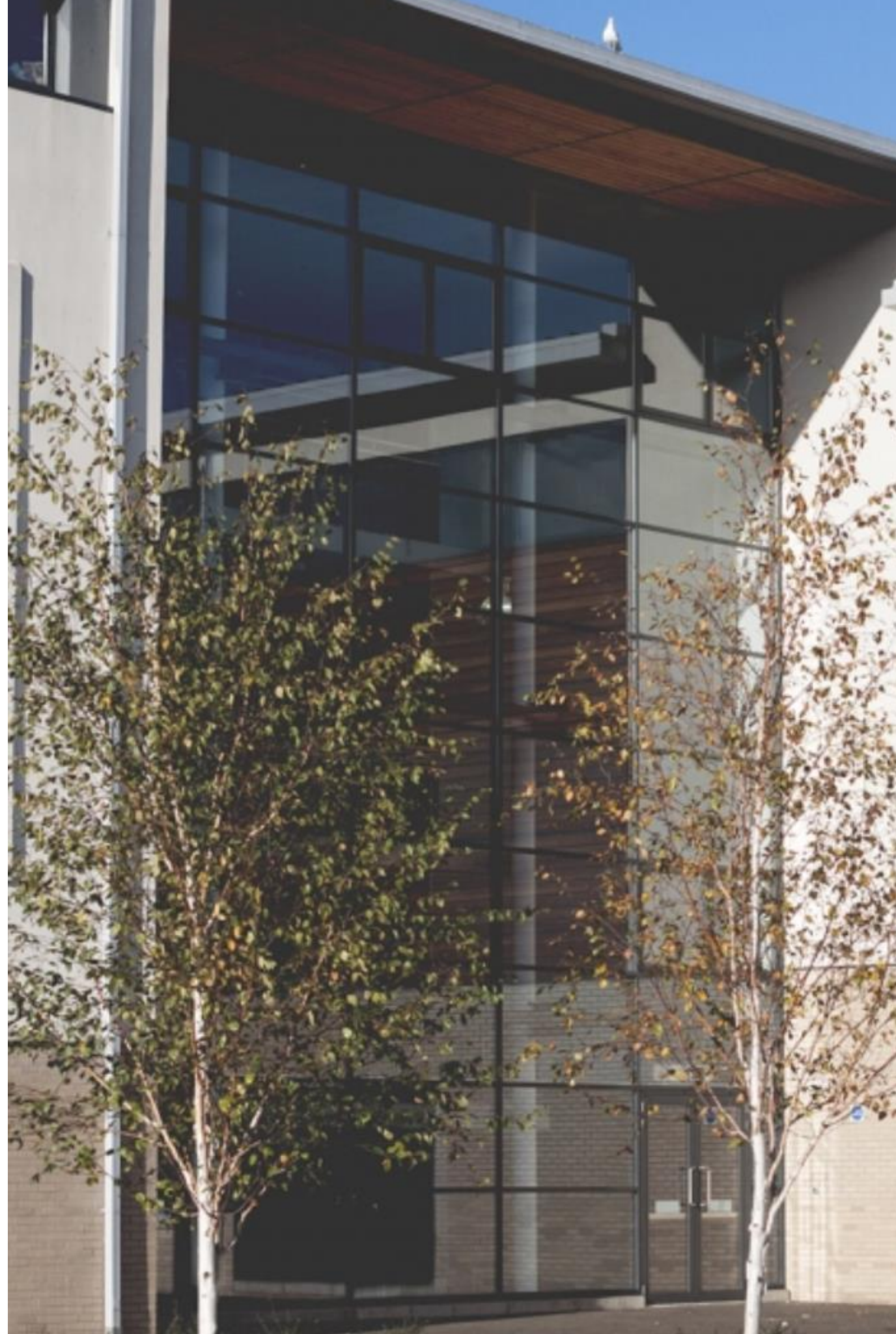
WELCOME

End of Transition August 2021

# Our School

---

- Tynecastle CARES
- Be Ready, Be Respectful,  
Be Your Best
- High expectations
- Attendance and punctuality
- Restorative practices



## Tynecastle CARES

---

- Challenge
- Ambition
- Respect
- Enjoyment
- Success



# School Ethos

---

- Almost all cases, the relationships between staff and young people are very supportive and caring.
- Almost all young people take ownership of the school's values, particularly the value of respect.





Creativity and fun at our school

# Pupil Support

---

- Key Adult System
- Students known well and taught PSE by Pupil Support Leaders
- Integrated Support Team
- Place2Be
- Mentors/Restorative Champions



Adventure



Me and My World



*I think I'm more confident on a bike and I can cycle more. This activity was great."*

All S1s have a timetabled period of JASS a week. Throughout the year they work towards their Gold Award by completing the 4 sections. They build on lots of skills, work with community groups and explore new things. The award is very different for each individual.

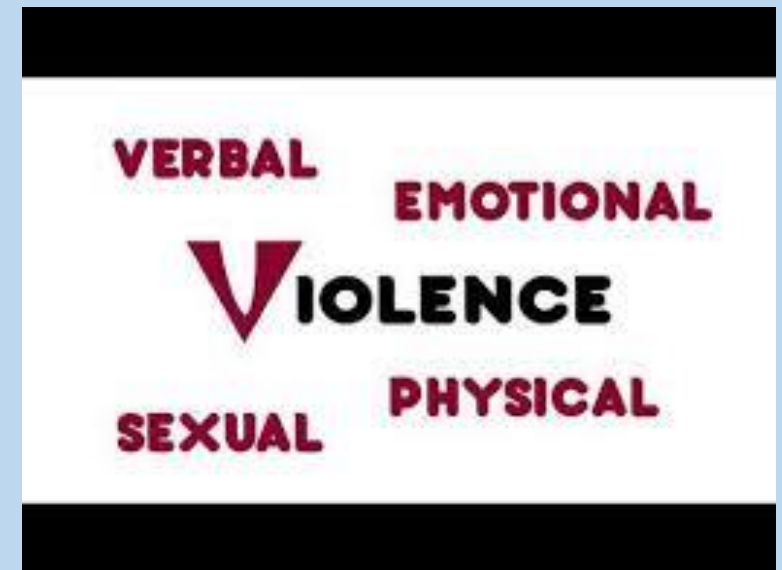


MY Interest



*"Football-I found it hard at the beginning. I learned that it is good to practise using your other foot so you can get better."*

Get Active



- is a peer **mentoring** programme that gives young people the chance to explore and challenge the attitudes, beliefs and cultural norms that underpin gender-based violence, bullying and other forms of violence.
- It allows young people the opportunity to develop their confidence, communication skills, leadership and organisational skills.



# Communication

---

- Key Adult and Pupil Support Leader - key people
- Email and text communication
- Website:  
*[www.tynecastle.edin.sch.uk](http://www.tynecastle.edin.sch.uk)*
- Maildrops – throughout the year by post / in schoolbags
- In-school supports for parents / carers
- Focus groups
- Parent Council welcomes new members!



# Communication on my child's progress

---

- S1 Course Information booklet on our website
- 5 Target Setting reports throughout the year
- S1 consultation for parents / carers:  
Thursday 29 October,  
4.30-7pm
- Merits / demerits summary: twice a term



Dear Parent/Carer,

Tynecastle High School is committed to high expectations for all its young people. We will give you regular updates about your child's progress. In each update you will receive information about your child's target level (Curriculum for Excellence level 3 or 4), whether they are on or off target and the next steps for improvement. Please see below for the most recent update.

Your child's attendance is: **97%**. Attendance is strongly linked to how well your child performs in their exams. If attendance drops below 95% we would become concerned. We ask for your continued support to ensure attendance remains above 95%.

Subject Name	Teacher	Level	Target	Progress Update		Next Steps for Improvement		
				September	November	1	2	3
Art & Design	A. Carnaghan	CfE	3	ON	ON	C	H	
CfE Craft & Design	D. Revolta	CfE	3	OFF	OFF	A		
English	L. Barnett	CfE	3	ON	ON	H		
French	J. Francis	CfE	3	ON	ON	I		
Health & Food Technology	C. MacGill	CfE	3	ON	ON	F	Q	
Information Technology	J. Munro	CfE	3	ON	ON	V		
Mathematics	J. Byrne	CfE	3	ON	ON	G	Q	

Initial Comments:

**X** - Has made an excellent start to the course

**G** - Has made a good start to the course

**M** - is not currently meeting expectations

Key to Next Steps For Improvement:

**A** - Improve Attendance

**C** - Complete coursework to the best of my ability

**H** - Complete homework on time

**K** - Revise key skills regularly

**O** - Make use of online resources/suggested websites

**Q** - Don't hesitate to ask for help at any time

**S** - Attend supported study classes every week

**V** - Very good effort, keep up the good work

**B** - Make more positive behaviour choices to avoid disrupting learning

**E** - Bring all necessary equipment/kit to every lesson

**I** - Improve focus and commitment in class to improve chances of success

**N** - No target in this report as student is new to subject

**P** - Make a study plan

**R** - Read over course notes regularly

**T** - Improve Timekeeping

**W** - Catch up on work missed

## Further Information

To date, your child has been late on 0 occasions. This number includes both lates in the morning and in the afternoon.

If you would like to discuss anything detailed on this report, please contact your child's Pupil Support Leader in the first instance. You may also wish to speak with the Year Head.

Pupil Support Leader: McLeod, K.

Email: [katy.mcleod@tynecastle.edin.sch.uk](mailto:katy.mcleod@tynecastle.edin.sch.uk)

Thank you in anticipation for your support.

Kind Regards,



# Opportunities - parents

---

- Parent Council - significant positive impact.
- Consultation
- Burns Supper
- Performance Showcase
- Place2Be



# Covid 19 measures

---

- Start of day
- End of day
- One-way system
- Outside break and lunch
- Face coverings
- Reporting illness
- Lateral Flow Tests
- Flu Vaccination



**FAQ**

